

## **THE MAPPING OF LOCAL AUTHORITY, PCC AND CCG DOMESTIC ABUSE COMMISSIONING LEADS**

### **INTRODUCTION**

Standing Together Against Domestic Violence (STADV) was appointed by the Domestic Abuse Commissioner's Office for England and Wales to create a nationwide picture surrounding the commissioning of domestic abuse (DA) services, across every Local Authority in England, Police and Crime Commissioner's office (PCC), and Clinical Commissioning Group (CCG) in England.

The following required outputs were identified:

- An easily searchable contact list for every individual who commissions domestic abuse services, including their email address, their job title, the name of the organisation they work for, the types of activity they do (from a drop-down list) and, where possible, their level of seniority.
- A short report summarising the findings, which will include:
  - o Which team the DA work is commissioned from
  - o The proportion of commissioners (by type) with a Domestic Abuse lead or team;
  - o The proportion of commissioners who house their domestic abuse lead within different Departments (e.g. Housing, Community Safety, Social Care).
  - o The type of activity undertaken by commissioners (e.g. Coordination of MARACS, attendance of strategic boards)
  - o The totality of FTE across Local Authorities, PCCs and CCGs who commission DA services;
  - o Analysis on the Local Authorities with the highest FTE per head of population vs lowest;

### **METHODOLOGY IN BRIEF**

- Desktop research was carried out in order to understand the target audience, their structures and identify respondent numbers and locality
- Survey questions were developed to allow for the achievement of outputs
- Survey design was created to allow for the variances of the 3 main targeted organisations (Local Authorities, PCC's and CCG's)
- Piloting and revision of survey took place before launch
- Survey was launched to an initial contact list held by STADV and disseminated through networks
- Desk research was carried out to obtain email addresses for all organisations
- Responses and queries were monitored

- Intense direct targeting was carried out online and via phone contact to identify key personnel to send survey to
- Master results template was created, listing all organisations awaiting responses
- Follow-up emails were sent out on a regular basis to obtain outstanding survey results
- Master results table was populated and data cleaned to enable results analysis

[LINK TO THE ONLINE SURVEY IS HERE](#) – A copy of the survey can be found in the appendices of this report.

*Limitations*

- *The mapping process started during the COVID-19 pandemic which saw a lockdown introduced in the UK on 23<sup>rd</sup> March 2020, which had a huge impact on those involved in the process. As a result, the survey end date was extended and some organisations were unable to complete the survey*
- *The scale of the research and number of organisations involved generated an extensive amount of work and data to analyse, which required a lot of resource. This has also revealed opportunities and scope for further analysis beyond the initial outputs*

**THE TARGET AUDIENCE**

The population for the survey was made up as follows:

Local Authorities in England	334
Police and Crime Commissioners Offices	43
Clinical Commissioning Groups	127
<b>TOTAL POPULATION</b>	<b>503 Organisations</b>

## RESULTS

### OVERVIEW

- Data was captured for 72% of the total population through survey results and/or emails
- For the remaining 28%, email details for a central team were obtained
- A total of 280 surveys were completed, as is shown in respondent table below

TABLE SHOWING THE NUMBER OF RESPONSES OBTAINED AROUND COMMISSIONING ACTIVITY				
ORGANISATION	Surveys completed	Additional Contact <i>(generally saying org doesn't commission)</i>	Survey not Received <i>(central team email obtained)</i>	TOTAL POPULATION
Local Authority	176	86	72	334
PCC	37	2	4	43
CCG	50	13	64	127
Other*	17			
<b>TOTAL</b>	<b>280</b>	<b>101</b>		<b>503 (results for 381)</b>

\*This refers to surveys that came in from organisations outside the selected target, including Welsh LA's, Housing Groups and Older persons Charities

- The majority of CCG's were not directly involved in commissioning. Some mentioned the commissioning of IRIS and many had involvement with the local DA team in terms of MARAC and safeguarding.
- The majority of Local Authorities sit in a two-tier structure – county and districts or boroughs – with responsibility for services split between the two. It was found that often the county had responsibility for the commissioning of DA services and this information was captured.
- Responses to the survey were often received for districts/boroughs that stated most commissioning was done at county level. This gave an opportunity for more data capture.
- It was found that very recently, all round the country, there have been mergers of CCG's into central CCG's. Where identified, these are listed on a worksheet within the full results table, for reference. For some, it was found that the newly formed central CCG was the main contact, and others still gave information independently.
- Several local authorities were also found to have recently merged

### FULL RESULTS TABLE

From all information gathered, an extensive master results table was collated. This contains the raw data around commissioning contacts, services and structures. From this data (supplied separately) the results shown below have been compiled. This data can be used for further analysis around DA services, as suggested at the end of this report.

# CONTACT LIST

An easily searchable contact list has been created (attached separately) for the 503 organisations in this research, providing a database of over 600 contacts working in the domestic abuse field.

The database is divided by organisation type and states whether a survey was received or not, or whether the commissioning is done at county level. DA Service commissioners are listed for each organisation, along with DA/VAWG leads and additional contacts.

Where a district states its commissioning is carried out by the county, then county contact details are listed alongside it. Where a survey was not received, the organisation's central email address or community safety department email is listed.

DA Service Commissioners are listed with their name, organisation type, organisation name, job title, department and email address and can be searched by any of these components.

The image below outlines the contact list format

	A	B	C	D	E	F	
	Survey Status	Commissioning	Commission DA	Organisation Type	Organisation Name	DAC Lead Name	DAC
1	Survey In	County		Local Authority	Westminster City Council	Adam Taylor	Comr
170	Survey In			Local Authority	Wigan Metropolitan Borough Council	Sarah Owen	Servic
171	Survey In			Local Authority	Wiltshire Council	Hayley Mortimer	Publi
172	Survey In	Surrey		Local Authority	Woking Borough Council	Camilla Edmiston	Comr
173	Survey In			Local Authority	Wokingham Borough Council	Natasha Jones	Comr
174	Survey In			Local Authority	Wolverhampton City Council	Lynsey Kelly	Head
175	Survey In			Local Authority	Worcestershire County Council	Rosie Winyard	Senio
176	Survey In	Worcestershire	No	Local Authority	Wyre Forest District Council - we do not have	Details for contact purposes only, as	Comr
177	Through County	Cumbria	No	Local Authority	Allerdale Borough Council	Derek Houston	Senio
178	Through County	Derbyshire	No	Local Authority	Amber Valley Borough Council	Alison Boyce	Dome
179	Through County	Nottinghamshire	No	Local Authority	Ashfield District Council	Rebecca Atchinson	Senio
180							

**Survey Status**  
Showing if survey received / Commissioning at county level etc

Organisations arranged by type - LA /PCC / CCG

Organisation name, followed by DAC names / VAWG Leads and further contacts. Where no survey has been received, the organisations central contact email is listed as main contact.

County name if commissioning activity carried out there

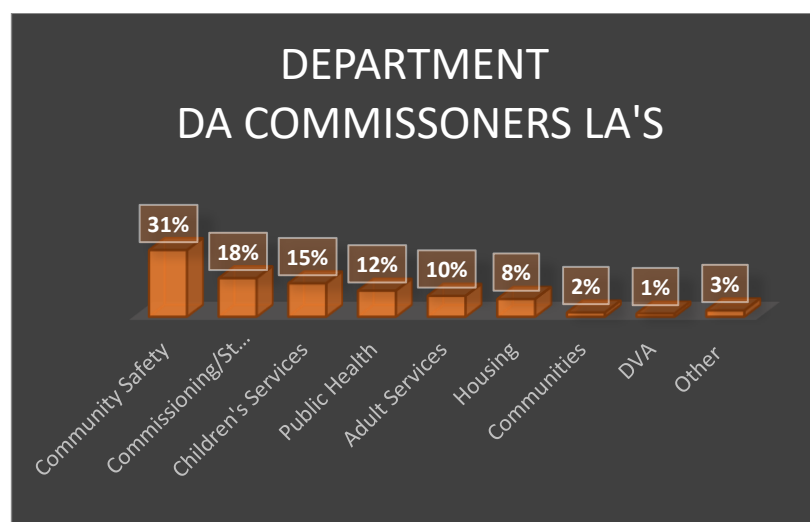
If org clearly states they do not commission DA then it is listed here

## DEPARTMENTS / TEAMS

### Local Authority

It was found that the majority of DA Commissioners\* within a local authority sit within the Community Safety Team (31%), followed by a Commissioning/Strategy Team (19%), Children's Services (15%) and Public Health (12%). See full results table for specific department titles.

\*Note that this is based on the contacts listed in the survey, some may have responsibility for DA but not all commissioning. However, the outcome of teams within which commissioning sits would likely be as shown here.

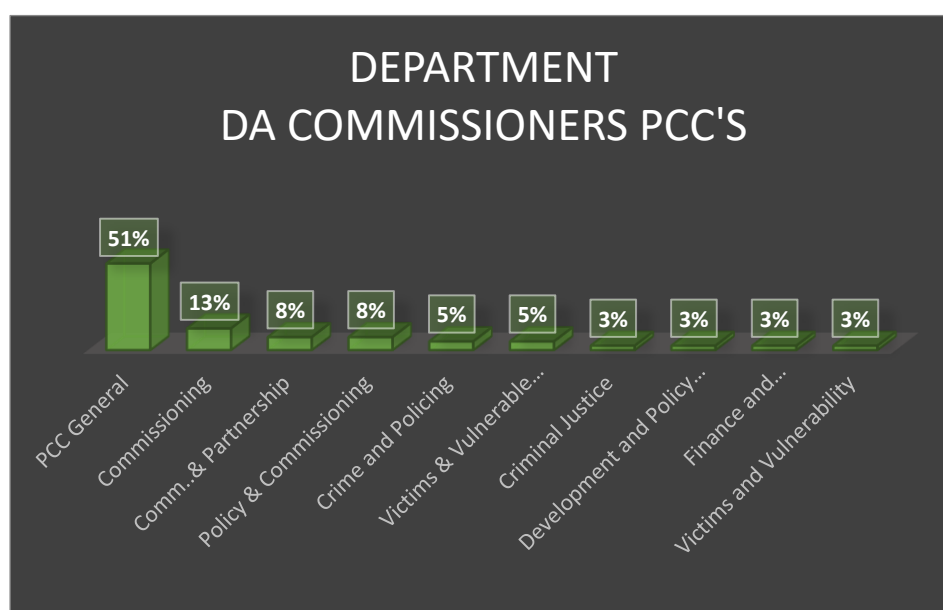


Department in which DAC sits, LA's	Actual Number*	%
Community Safety	64	31%
Commissioning/Strategy	37	18%
Children's Services	32	15%
Public Health	25	12%
Adult Services	20	10%
Housing	17	8%
Communities	4	2%
DVA	3	1%
Other	6	3%
<b>Total</b>	<b>208</b>	<b>100%</b>

\*based on surveys received, may include some DA leads without commissioning responsibility

### PCC's

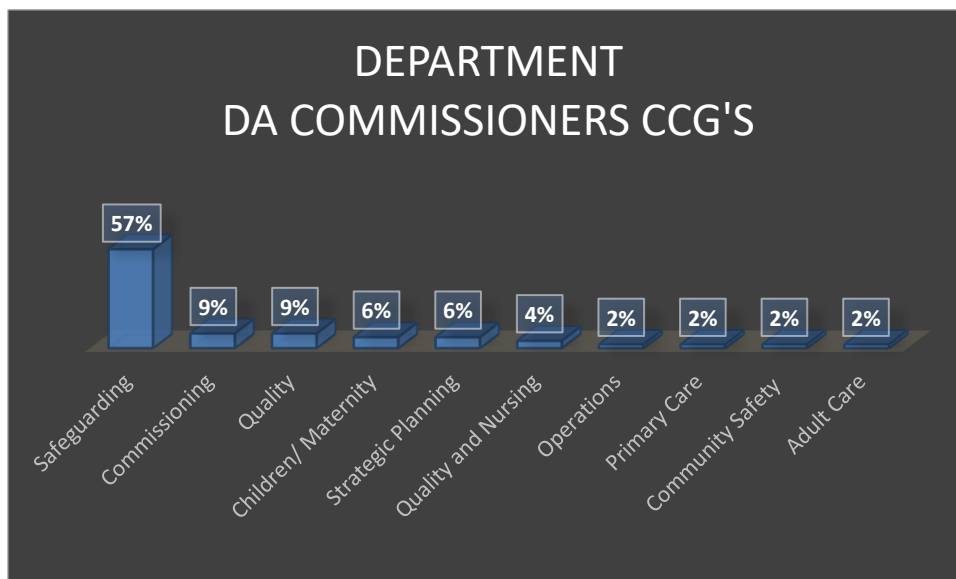
The majority of PCC commissioners (51%) did not list a specific department, others sit within a Commissioning team (29%), Crime and Policing (5%) and Victims and Vulnerability (5%).



## CCG's

57% of DA leads\* in CCG's sit within the safeguarding team, with a fairly even number sitting across other departments.

\*The majority of CCG's stated that they do not directly commission DA but a lead name/dept for domestic abuse was captured



## JOB TITLES

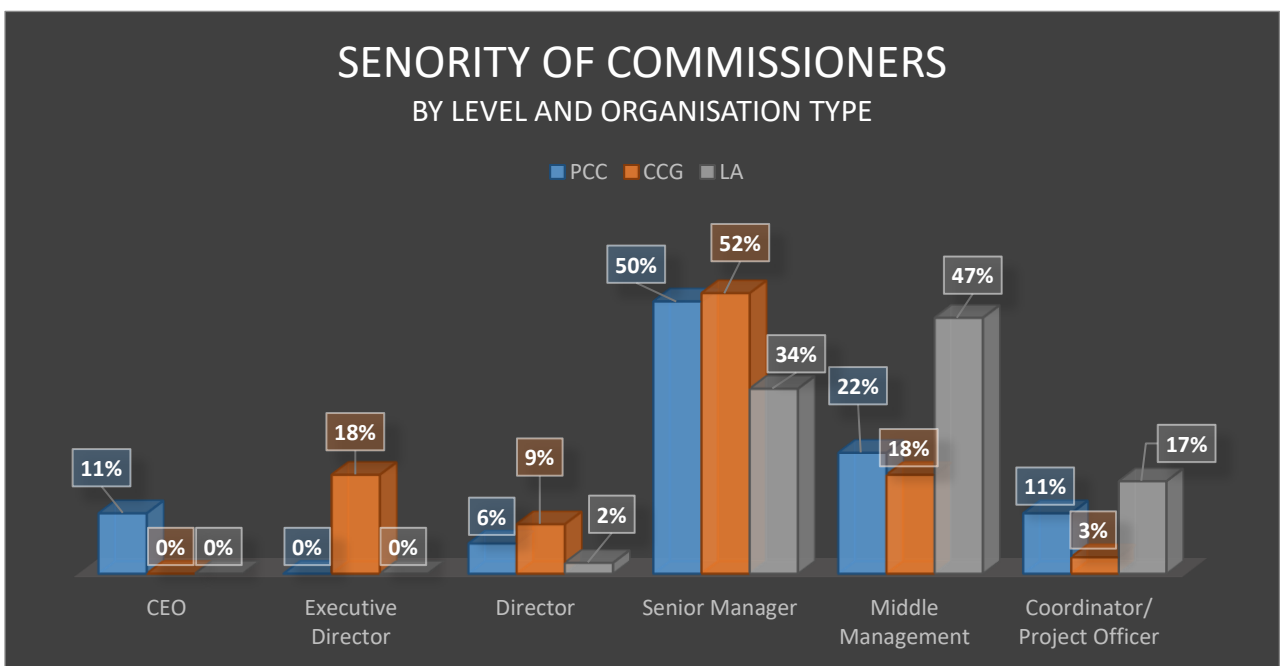
There was a vast range of job titles amongst commissioners. A range of which are shown below, for Local Authorities.

<b>JOB TITLES, BY TYPE, WITHIN LOCAL AUTHORITIES</b>	
<b>COMMISSIONING</b>	<b>HOUSING</b>
Commissioning Manager	Housing Officer / Manager
Strategic Commissioner	Head/Director of Housing
Commissioner	Housing Commissioning/Strategy & Partnership Manager
Commissioning Officer	Rough Sleeping Commissioner
Head of Commissioning	<b>PUBLIC HEALTH</b>
Lead Commissioner	Public Health Officer
<b>DOMESTIC ABUSE</b>	Senior Public Health Commissioner
Domestic Abuse and Sexual Violence Coordinator/Manager	Senior Public Health Manager
Domestic Abuse Strategic Lead	Head of Public Health
VAWG Lead	Public Health Specialist Community Safety
Domestic & Sexual Violence Policy Officer	Assistant Director People
Chair, DA Forum	Public Health Consultant
Development Manager - Domestic Abuse and Sexual Violence	Senior Manager - Health and Care Integration
Domestic Abuse Commissioner	<b>POLICY</b>

Head of Domestic Abuse Partnerships	Policy Officer
Service Manager	Head of Regulatory Services
<b>COMMUNITY SAFETY</b>	Policy, Information and Commissioning Manager
Community Safety Officer / Manager	<b>CHILDREN'S SERVICES</b>
Head of Community Safety	Assistant Director - Children's Commissioning
Assistant Director	Assistant Director - Children's Social Care
Principal Officer Communities and Partnerships	Director of Early Help and Prevention
Community Safety & Safeguarding Manager	Head of Children's Safeguarding
Partnership Manager	Operational Director - Children's Care and Support
Associate Lead	Director of Education, Early Help and SEND
Communities and Commissioning Manager	
Community Safety Lead: Violence Against Women and Girls and Hate Crime	
Community Safety Specialist Lead	
Director- Community Solutions	
Divisional Manager Communities and Wellbeing	
Service Leader Community Safety S'guard & HN, Adults, Communities and Prevention	
Anti-Social Behaviour Officer	

## SENIORITY LEVELS

The DA commissioners were asked their level of seniority within their organisation. Results are shown below for each of the three organisation types. The highest number of commissioning, collectively, was carried out by senior managers.



## COMMISSIONER ACTIVITY

Commissioners were asked, as well as DA commissioning, what other activities, from a list shown, they were specifically involved in. Results show a high level of attendance of strategic boards, contract management and policy development across all organisation types. This is shown in the table below.

Activity Undertaken by DA Commissioners	LA's	CCG's	PCC's
Attendance of strategic boards	78.36%	73.91%	90.00%
Contract Management	71.35%	32.61%	100.00%
Policy Development	67.84%	50.00%	72.50%
Coordination of DA Forums	54.97%	15.22%	30.00%
Coordination of other Multi-Agency meeting, including housing, mental health	51.46%	21.74%	35.00%
Coordination of MARACs	27.49%	8.70%	10.00%
Coordination of MATACS or Perpetrator Panels	7.60%	2.17%	10.00%

We then asked about other activities that they took part in. Feedback is shown below.

ADDITIONAL ACITVITIES UNDERTAKED BY DAC'S
<b>Local Authorities</b>
DA Training, Development and Awareness
Chairing of MARAC
Coordination of DA Partnership
Co-ordination of Domestic Homicide Reviews
Domestic Abuse Strategy Lead
Support to Strategic Housing Partnership
Partnership Development
In House IDVA Service
Running CSP
<b>CCG's</b>
All DA services are commissioned by LA or PCC.
Attendance at CSP where MARAC is strategically managed.
Commission Primary Care DA services (IRIS Project)
Commissioner Domestic Abuse Service with one Voluntary Sector Organisation
Staff Training Programme, Annual Conference, Rape Scrutiny Panel Member
Attend CSP
Vice Chair of the London Modern Slavery and Human Trafficking group
The CCG works in partnership with LA/Public Health Department in all of the above activities.



Coordinate the sharing of information from GP practices to MARAC and contribute to policy development for DA.

**PCC's**

DHR Coordination

Grant Agreements and Govt returns

Lead on County IPV strategy development and delivery

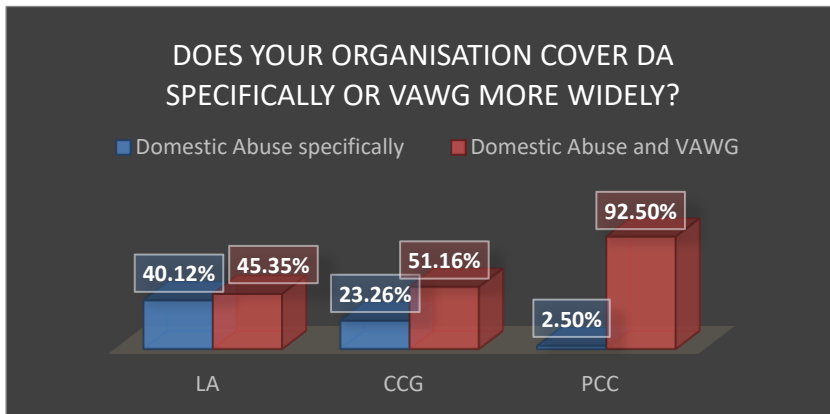
Community Safety Partnership sits with the OPCCN

Regional duties including strategic response, policy and guidance

**DOMESTIC ABUSE AND VAWG AGENDA**

We asked all respondents whether their organisation focused on domestic abuse specifically or the wider VAWG agenda. A higher percentage stated they covered VAWG more widely, across all organisations, although it was almost half and half for Local Authorities, compared to over 90% of PCC's covering the wider VAWG agenda. A theme that appeared to come through was that DA activity did include a wider agenda and work supported both men and women. Potentially this may have been a reason as to why VAWG was not ticked as being covered (due to respondents thinking they can't include VAWG as they also commission support for male victims). There might have been a lack of understanding of the full VAWG agenda, or perhaps VAWG work is done on a more local level. We asked all organisations which services they commissioned, and a further analysis could be done here (they may have not ticked VAWG as an area they cover, but then may later state that they commission some VAWG services).

Another theme that came up was organisations stating that they cover DA specifically, but also sexual abuse. The chart below shows the overall responses. Further comments around this can be found below and in the appendices of this report.



**Comments Around DA / VAWG Agenda (also see appendices)**

DA but Sexual Violence

While the commissioning function currently focuses on DA specifically, the Safeguarding and Domestic Violence Team has a wider remit which includes Modern Slavery and other safeguarding issues such as Honour Based Abuse. The wider VAWG agenda is also picked up on a regional basis through the Police and Crime Commissioner's structures

DA Services not based on gender

Commission DA only but VAWG within community safety

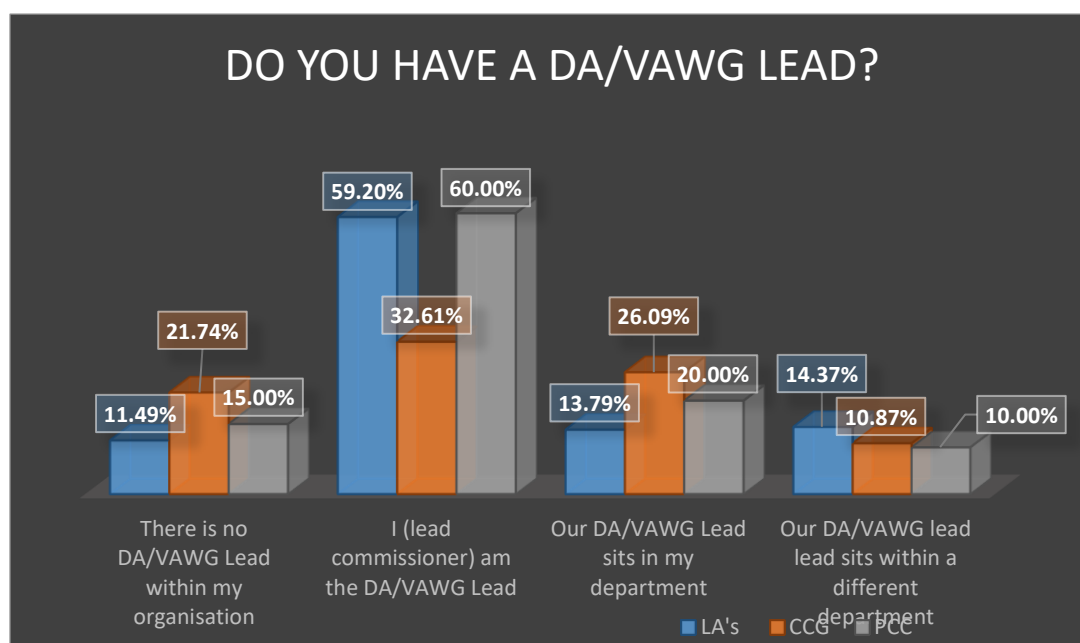
DA in context of children and families

## DOMESTIC ABUSE / VAWG LEAD

Organisations/commissioners were asked whether they had a DA/VAWG lead, whether the commissioner was, in fact, the DA/VAWG lead, and in which department the DA/VAWG lead sat.

For the majority of Local Authorities and PCC's the commissioner was also the DA/VAWG lead (60%) or the lead sat within the same department (around a further 15%). Further analysis could be done around those organisations that state they have no DA/VAWG lead.

	LA's	CCG	PCC
There is no DA/VAWG Lead within my organisation	11.49%	21.74%	15.00%
I (lead commissioner) am the DA/VAWG Lead	59.20%	32.61%	60.00%
Our DA/VAWG lead sits in my department	13.79%	26.09%	20.00%
Our DA/VAWG lead sits within a different department	14.37%	10.87%	10.00%



The table below shows the department differences in local authorities where the DAC sits in in another team to the DA/VWAG Lead.

<b>Table showing varying departments where DA commissioner sits in a different team to the DA/VAWG lead, within Local Authorities.</b>	
Each row represents an individual organisation	
DAC Lead Department	DA/VAWG Lead Differing Department
Adult Social Care	Community Safety Unit
Adult Social Care	Community Safety Partnership
Adult Social Care	Community Safety Partnership
Adult Social Care and Integrated Services	Community Safety
Adults and Health	Safer Leeds
Adults and Housing - Commissioning	Community Safety Partnership

Adults, Housing and Health	Community Safety Partnership
Commissioning	Strategy & Engagement Team
Commissioning, Quality & Practice Team	Community Safety
Health and Wellbeing	Community Safety Partnership
Integrated Commissioning	Community Safety
Integrated Commissioning	Neighbourhoods and Environment
Joint Commissioning Team	Community Safety
Joint Commissioning Unit	Community Safety Partnership
Public Health	Community Safety
Public Health and Wellbeing	Community Safety
Public Protection & Licensing	Community Safety Partnership
Strategic Commissioning	Community Safety Partnership
Strategy and Commissioning	Community Safety Partnership

## FULL TIME EQUIVALENT / STAFFING NUMBERS

### LOCAL AUTHORITIES - STAFFING

From responses received by local authorities, it was found that there were 34.9 FTE's who were involved in commissioning DA only across the country (actual number of individuals = 95), with an additional 104.8 FTE's involved in commissioning and DA activities (actual number = 186). The table below shows the numbers within commissioning teams at Local Authority Level. Based on the responses received, a further estimated total for England was calculated.

Staff by activity	Actual Staff Numbers	FTE from surveys in	FTE based on whole population (estimated- taking into account surveys that were not received)
Commissioning Only	95	34.9	40.1
Commissioning and other DA activities	186	104.8	120.5
DA Activities (non-commissioning focus)	142	96.3	110.7
Administration	33	20.3	23.3
<b>Total Working in Domestic Abuse Commissioning and Team*</b>	<b>456</b>	<b>256.3</b>	<b>294.6</b>
*It's important to note that this is at commissioner's level and their team and does not reflect the full population of DA working staff (e.g. does not include frontline)			

The table below shows the number of employees working on domestic abuse that sit in a commissioning team:

No of employees in LA commissioning team, working on domestic abuse	% of LA's with this number of staff in commissioning/DA team
1	24%
2	16%
3	21%
4	13%
5	13%
6	6%
7	2%
8	1%
9	1%
10	2%

Snapshot of comments from the survey around staffing (see result sheet for full list):

- *Although the roles above are specifically linked to commissioning DA services for victims, families and perpetrators - there is more work embedded in the service provided across the organisation so this does not provide the full picture in terms of activity undertaken across the organisation in relation to supporting those affected by domestic abuse*
- *Currently this is difficult to define as we have only just identified the need for a lead. Hopefully when the next survey comes around we will have more answers for this*
- *In addition I have an SVA lead, our section has a modern slavery lead, our organisation has a CSE lead*
- *This only applies to staff in my service area not colleagues in rough sleeping, children's services nor public health*
- *We also have DA Practice Leads within Children's Social Care and Adult Social Care (this theme was shown on several occasions that other teams may have DA staff)*

## CLINICAL COMMISSIONING GROUPS - STAFFING

Responses to the questions around staff was completed by less than half the surveys received by CCG's (21), likely due to the fact that very few were involved in DA Commissioning. The table below shows the overall number of staff in various DA roles. As can be seen, there is a relatively small amount of staff working specifically on DA activities. Just 10 CCG's reported having more than 1 staff member involved in the DA team.

Staff by activity	Actual Staff Numbers	FTE from surveys in
Commissioning only	9	5.1
Commissioning and other DA activities	9	2.3
DA Activities (non-commissioning focus)	18	5.5
Coordinator/Project Officer	2	0.4
<b>Total</b>	<b>38</b>	<b>13.3</b>

Further comments from the survey around staffing:

- *As a safeguarding team within the CCG we provide advice and support to Primary Care staff on how to manage domestic abuse. We have a responsibility for training around DA. We sit on two DA committees, contribute to policy development and have been instrumental in setting up and maintaining information share between our GP practices and MARAC.*
- *Domestic Abuse falls within the remit of all staff in the safeguarding team and the head of safeguarding takes the lead, none as commissioned specifically*
- *Domestic abuse forms part of the safeguarding remit of the above staff, these roles are as above but not all hours are dedicated to the DA agenda*
- *This excludes the IDVA manager who takes on a role wider than managing the IDVA team, but deemed 'front line'*

## **POLICE AND CRIME COMMISSIONERS – STAFFING**

The table below shows the FTE number of staff working on DA commissioning and activities in PCC's:

<b>Staff by activity</b>	<b>Actual Staff Numbers</b>	<b>FTE from surveys in</b>
Commissioning only	17	4.8
Commissioning and other DA activities	66	34.3
DA Activities (non-commissioning focus)	15	6.9
Administration	12	3
<b>Total</b>	<b>110</b>	<b>49</b>

Further comments from the survey around staffing:

- *The team is split into commissioning and partnership delivery. The Commissioning officer focuses on Commissioning and Partnership delivery focus on development of partnerships. Both roles work closely together*
- *This is a challenging question to answer for a PCCs Office as we work collaboratively with partners to commission services*
- *We are a small office who co-commission the service with the Police Force. The Force have a larger number of people working in this area*
- *Technically we do not commission we grant. The above are involved in this process as outlined*

## FURTHER ANALYSIS and RECOMMENDATIONS

Following on from the topline analysis shown in this report, the extensive range of data that has been gathered will allow for further in-depth research around domestic abuse commissioning. Some suggested areas for more analysis and further recommendations are shown below.

**Services Commissioned** – we asked organisations to select the services they commission from a list provided. It would be useful to analyse this feedback. Data gathered included whether services were jointly commissioned and whether they included women only services.

**Joint Commissioning** - data has been gathered around whether organisations have a joint commissioning group. This is another area that would be interesting to look at.

**Commissioner managers**– it would be interesting to look into the data collected around the commissioner managers, in terms of their job titles. We have also collected these email addresses and they could be used in a contact list.

**Population comparisons** – general FTE analysis has been carried out as shown in the results above. Population numbers for each LA have been collected and are listed in the full results spreadsheet. Additional resources would allow for further analysis comparing FTE and population size.

**Unitaries, Local Authority Structures and geographical split** – the results could be further split into areas around the country, so PCC's, CCG and LA's that fall in the same area could be grouped together as well as all two-tier structures linked amongst the LA's

**GDPR** – feedback about information sharing has been collected. This needs to be taken into account with usage of data and information gathered (particularly with contact lists).

## APPENDICES

### THE SURVEY

ON BEHALF OF THE DOMESTIC ABUSE COMMISSIONER FOR ENGLAND AND  
WALES

Mapping Domestic Abuse Commissioning Leads across PCCs, CCGs and Local Authorities

Welcome to our nationwide survey, March 2020

Thank you for your participation. Your input is important.

**Important Note: This survey has been designed to be completed by a lead domestic abuse service commissioner, or a representative within their organisation, who can respond on their behalf.**

1. From the list below, from which organisation are you replying?

- Police and Crime Commissioners Office
- Local Authority
- Clinical Commissioning Group

Other (please specify)

2. What is the name of the organisation that you work for?

For example, Herts County Council, Mansfield District Council, Humberside PCC, Somerset CCG

**3. Who has overall responsibility for commissioning Domestic Abuse (DA) Services within your organisation?  
N.B. The survey should be completed from the perspective of this lead**

*The definition of domestic abuse service for the purpose of this survey is: specialist services for the provision of support to victims and survivors of domestic abuse, as well as specialist community services that provide behaviour change programmes for perpetrators. (e.g. IDVA Service, Refuge provision, Specialist counselling or support groups, Specialist BME/disability or LGBT services. It would not include generic mental health provision, local authority housing, generic victim support services)*

**Name:**

**Job Title:**

**Organisation:**

**Postal Address:**

**Email:**

**Department:**  
*e.g. Community Safety, Housing, Criminal Justice*

**Managers Name (of person listed above):**

**Managers Job Title:**

**Managers email:**

**4. As the Lead Commissioner named above, please state your level of seniority from the dropdown box below.**

**Other (please specify)**



5. Are you aware of anybody else in your organisation who has responsibility for the commissioning of DA services, which do not fall under your remit? If no, please move onto question 6. If yes, please give details below?

*For example, within housing, social care or a safeguarding team*

Name:

Job Title:

Department:

Email Address:

Name 2:

Job Title:

Department:

Email Address:

Please state any further contacts in the box here:

6. As lead commissioner, what activities do you carry out? *That is, those which fall in-house for you/your team.*

*Please tick all that apply.*

Coordination of MARACs

Coordination of MATACS or Perpetrator Panels

Attendance of strategic boards

Coordination of DA Forums

Contract Management

Coordination of other Multi-Agency meeting, including housing, mental health

Policy Development

Other (please specify)

7. Does your commissioning role focus on Domestic Abuse specifically, or cover a wider Violence Against Women and Girls (VAWG) agenda?

Domestic Abuse specifically

Domestic Abuse and VAWG

Other / Comments

8. Which DA/VAWG Service(s) does your team commission (either solely or through a joint commissioning agreement).

*Please tick all that apply.*

	Sole Commission	Joint Commission	Does this includes a women only service? (please tick)
Independent Domestic Violence Advocacy (IDVA) Service	<input type="checkbox"/>	<input type="checkbox"/>	<input type="checkbox"/>
Specialist IDVA Post	<input type="checkbox"/>	<input type="checkbox"/>	<input type="checkbox"/>
MARAC	<input type="checkbox"/>	<input type="checkbox"/>	<input type="checkbox"/>
Rape Crisis Centre / Service	<input type="checkbox"/>	<input type="checkbox"/>	<input type="checkbox"/>
Refuge Provision	<input type="checkbox"/>	<input type="checkbox"/>	<input type="checkbox"/>
Specialist BAME Services	<input type="checkbox"/>	<input type="checkbox"/>	<input type="checkbox"/>
Specialist Counselling/Support Groups	<input type="checkbox"/>	<input type="checkbox"/>	<input type="checkbox"/>
DHRs	<input type="checkbox"/>	<input type="checkbox"/>	<input type="checkbox"/>
Specialist LGBT Services	<input type="checkbox"/>	<input type="checkbox"/>	<input type="checkbox"/>
Specialist Disability Services	<input type="checkbox"/>	<input type="checkbox"/>	<input type="checkbox"/>
Sanctuary Scheme	<input type="checkbox"/>	<input type="checkbox"/>	<input type="checkbox"/>
IRIS	<input type="checkbox"/>	<input type="checkbox"/>	<input type="checkbox"/>
Perpetrator Programme	<input type="checkbox"/>	<input type="checkbox"/>	<input type="checkbox"/>
DA Project (e.g. women's night safety charter)	<input type="checkbox"/>	<input type="checkbox"/>	<input type="checkbox"/>
DA Helpline	<input type="checkbox"/>	<input type="checkbox"/>	<input type="checkbox"/>
DA Coordinator	<input type="checkbox"/>	<input type="checkbox"/>	<input type="checkbox"/>
Criminal Justice Support	<input type="checkbox"/>	<input type="checkbox"/>	<input type="checkbox"/>
DA Support Workers	<input type="checkbox"/>	<input type="checkbox"/>	<input type="checkbox"/>
DA Training	<input type="checkbox"/>	<input type="checkbox"/>	<input type="checkbox"/>
General DA Service (e.g. one stop shop)	<input type="checkbox"/>	<input type="checkbox"/>	<input type="checkbox"/>
DA Workplace Policy	<input type="checkbox"/>	<input type="checkbox"/>	<input type="checkbox"/>
DA Champions	<input type="checkbox"/>	<input type="checkbox"/>	<input type="checkbox"/>
FGM	<input type="checkbox"/>	<input type="checkbox"/>	<input type="checkbox"/>
Forced Marriage	<input type="checkbox"/>	<input type="checkbox"/>	<input type="checkbox"/>
So called Honour Based Violence	<input type="checkbox"/>	<input type="checkbox"/>	<input type="checkbox"/>

	Sole Commission	Joint Commission	Does this includes a women only service? (please tick)
Stalking	<input type="checkbox"/>	<input type="checkbox"/>	<input type="checkbox"/>
Modern Slavery	<input type="checkbox"/>	<input type="checkbox"/>	<input type="checkbox"/>
Harmful Practices	<input type="checkbox"/>	<input type="checkbox"/>	<input type="checkbox"/>
Sexual Assault Referral Centre (SARC)	<input type="checkbox"/>	<input type="checkbox"/>	<input type="checkbox"/>
Sexual Exploitation	<input type="checkbox"/>	<input type="checkbox"/>	<input type="checkbox"/>
CSE	<input type="checkbox"/>	<input type="checkbox"/>	<input type="checkbox"/>
Women's Centre	<input type="checkbox"/>	<input type="checkbox"/>	<input type="checkbox"/>
Specialist Posts Other (state below)	<input type="checkbox"/>	<input type="checkbox"/>	<input type="checkbox"/>

Any further comments, including the type of specialist commissioned projects

9. Do you have a DA/VAWG Services joint commissioning group

- Yes
- No
- Unsure

If yes, which organisations sit in this group? Who is the lead?

10. Do you have a DA/VAWG lead within your organisation? Does this sit within your role, or within your department or fall under another team? Please provide details below.

- There is no DA/VAWG Lead within my organisation
- I (lead commissioner) am the DA/VAWG Lead
- Our DA/VAWG Lead sits in my department  
(Please provide lead name, job title and email address in box below)
- Our DA/VAWG lead sits within a different department  
(Please provide dept name, lead name, job title and email address in box below)

DA/VAWG Name, Job title, Dept, Email address:

11. Please estimate below how many Full Time Equivalent (FTE) Staff are responsible for commissioning DA services and working on other DA activities within your department.

Please complete one line per employee who has some responsibility for DA. You should include yourself (as commissioning lead) within this. *We do **not** need frontline staff to be included.*

\*\*\*It should be noted here that if your role as commissioner involves 50% of time working on DA issues and 50% on other, then this would be recorded as 0.5 FTE.\*\*\*

The calculation FTE is an employee's scheduled hours divided by the employer's hours for a full-time workweek. An employer with a 35-hour workweek would divide the employee's scheduled hours by 35 to determine the FTE. For example, an employee scheduled to work 21 hours per week would be 0.6 FTE, an employee scheduled to work 35 hours per week would be 1.0 FTE.

	Responsibility	Level of Seniority	FTE
Employee 1	<input type="text"/>	<input type="text"/>	<input type="text"/>
Employee 2	<input type="text"/>	<input type="text"/>	<input type="text"/>
Employee 3	<input type="text"/>	<input type="text"/>	<input type="text"/>
Employee 4	<input type="text"/>	<input type="text"/>	<input type="text"/>
Employee 5	<input type="text"/>	<input type="text"/>	<input type="text"/>
Employee 6	<input type="text"/>	<input type="text"/>	<input type="text"/>
Employee 7	<input type="text"/>	<input type="text"/>	<input type="text"/>
Employee 8	<input type="text"/>	<input type="text"/>	<input type="text"/>
Employee 9	<input type="text"/>	<input type="text"/>	<input type="text"/>
Employee 10	<input type="text"/>	<input type="text"/>	<input type="text"/>

Any further comments:

12. For our cross-referencing purposes. Where known, please provide the contact name of the lead DA commissioner of your PCC / Local Authority / CCG (that is, whichever two you don't fall within)

PCC DA Services

Commissioner Name:

CCG DA Services

Commissioner Name:

LA DA Services

Commissioner Name:

13. Any further comments?

14. It's useful for us to know who has completed this survey. If you have completed on behalf of the lead commissioner, whose details were provided in Q3, please provide your name, job title and email in the box below, if you are happy to do so

15. DATA Collection Notice

Data collected from this survey will be held by Standing Together against Domestic Violence and the Domestic Abuse Commissioner's Office. See our [privacy policy here](#).

Information gathered will be used for the purpose of improving service provision for victims/survivors, and their children, suffering from Domestic Abuse and/or other VAWG related issues. For further details please contact [commissioner@domesticabusecommissioner.independent.gov.uk](mailto:commissioner@domesticabusecommissioner.independent.gov.uk).

To develop our work within domestic abuse, we may share some of your information with partner agencies where necessary/relevant and proportionate to do so. Please complete the statement below.

I am willing for data collected to be shared, on occasion if relevant, with those listed below (please tick):

- Local Government Association / Association of Police and Crime Commissioners / Local Authorities
- Other Government departments
- 3rd Sector (voluntary) Organisations

Comments

## GENERAL COMMENTS FROM THE SURVEY

Below are some comments pulled out from the survey which provide some further insight into commissioning and structures

### Do you focus DA Specifically or wider VAWG agenda?

- *Commissioning function currently focuses on DA specifically, the Safeguarding and Domestic Violence Team has a wider remit which includes Modern Slavery and other safeguarding issues such as Honour Based Abuse. The wider VAWG agenda is also picked up on a regional basis through the Police and Crime Commissioner's structure*
- *Our services do not exclude any victim / survivor of Domestic Abuse based on gender or identity.*
- *Both VAWG and DA sit with Community Safety strategically, but DA commissioning only with myself*
- *Core Service provision is done via County Council, we (district) supplement where we can add value*
- *I also support on childhood trauma, and intergenerational vulnerability - our DASV agenda focusses on males and females*
- *Consideration being given to cover the wider VAWG agenda*
- *Our services provide support for male and female victims/survivor*
- *All victims plus families*

### Services Commissioned

These comments supplement question 8, where respondents are asked to select from a list around the services the commission and they include additional details of specialist services commissioned.

#### LOCAL AUTHORITY COMMENTS

- *As a district council overarching commissioning is coordinated and managed by county council. As the safeguarding lead, I have organised domestic abuse, modern slavery and contextual safeguarding training to frontline staff. I have designed a leaflet for staff for local and national helpline's. We are starting to redesign our website and sharing social media comms.*
- *Crisis Housing*
- *Holistic Approach*
- *Complex Case Hub*
- *Empowerment - specialist Children's DA Support Service*
- *We also have a Voluntary Community Faith Alliance (VCFA) in Bury.*
- *Although not directly commissioned I am involved in many of these areas of work - SARC, Rape Crisis Services, DHR, DA champions, DA training*
- *There are elements above which we run that are not commissioned - i.e. we run DA Responders ourselves*
- *I don't commission IDVA/MARAC or front door. It is part of my role to oversee the management of these staff who are Council employed but whose budget is shared by Council (85%), PCC, Police and Health All other DA services are in one commission - myCWA (Cheshire Without Abuse) and*

*this is solely commissioned by the Council but they attract other funding to widen their offer. We do not commission separate Stalking, HBV or FM services, LGBT or BME but our staff are expected to respond to these issues. Police pay for MARAC co-ordination and the Community Safety Partnership commissions DHRs*

- *Healthy Relationship projects for young people*
- *Specialist posts include a specific service for children and young people. The providers of the DA services support a wide range of areas including FGM, FM, HBV as part of their overall offer but is not a specialist service. Within the service specification we identified under represented groups incl. LGBT, BAMER, men and people with care and support needs that the service need to consider in their provision. DA champions are in place via the commissioned provider. The services are not commissioned as women only provision but the service providers deliver women's only services as required. CSE is also commissioned separately by Public Health and the local CCG.*
- *Some of these services are provided on a joint multi-agency basis - however I am not sure it would be accurate to say that they were commissioned e.g. MARACs Also some areas such as Sexual exploitation, CSE, Modern Slavery cover much wider areas than Domestic Abuse or VAWG and are cover through our local adults and children's safeguarding arrangements. Also whilst there are no separate commissioning arrangements for separate cohorts such as LGBT, BAME etc it is expected that the services that are commissioned would cover these areas.*
- *Arbour Project - management of sexual offenders*
- *Family Court Liaison Worker*
- *Hospital IDVA*
- *Preventative work with boys/young men aged 11-18; targeted work for victims with complex needs aged 18-24 and children*
- *We have additionally commissioned and funded the extension of JADA+ to provide additional coverage / hours in our area*
- *Referral Coordinator (in development) Specialist Case workers (8) for standard and medium risk (in development)*
- *We are developing a DA workplace policy, DA e-learning and training for our workforce in house*
- *DfE Family Safeguarding Model*
- *Support for those DA victims experiencing mental health issues*
- *Specialist posts: DA Commission Programme Lead, Community Engagement Officer, DA Housing Coordinator*
- *Some in house, MARACS etc not commissioned*
- *We don't commission any of the above as a Council - the Domestic Abuse Intervention Service - provide directly a service that deals with all types of domestic abuse at all levels of risk and which works directly with victims and assesses perpetrators and provides a perpetrator programme and runs the MARAC*
- *Midwifery support service*
- *Commissioning of DA services is complex in NELC. The 'team' is made up of a single Domestic Abuse Coordinator post. Services are commissioned by a wide range of internal and external teams/agencies so there is no single commissioning lead, but the Domestic Abuse Coordinator is the lead for DA within the LA. Refuge and Outreach & Resettlement (includes a Women's Centre) is commissioned via Strategic Housing. There is no SARC in North East Lincolnshire, however we have use of the one based in Hull. DA Training goes through our Learning & Development team. Other services including MARAC Coordinator and IDVA support and Target Hardening (similar to the Sanctuary Scheme) are commissioned via the CSP but contracted managed by the LA. DHR's are also the responsibility of the CSP and would be commissioned by it. Modern Slavery and CSE*

*fall within the remit of Safer Communities but not the Domestic Abuse Coordinator. There is a DA Workplace Policy in place but this is not commissioned as such.*

- *Children's Services also commission projects to support children and families specifically, and ASC commission our refuge contracts. The OPCC in Norfolk commissions all other victim based services across the county including perpetrator provision.*
- *Rural IDVA*
- *Specialist BAME IDVA's*
- *Housing IDVA*
- *Accessible for both men and women but gender sensitive delivery so men and women would not mix*
- *Complex needs advocate*
- *Commission a DA service to provide all – DAVSS (volunteer support services)*
- *DRIVE perp programme*
- *Family domestic abuse service*
- *The core specialist Domestic Abuse (DA) service commissioned by the LA includes the requirement to have workers with specialist knowledge in the follow areas; BAME, LGBT, Disability, Older people, Harmful Traditional practices (FGM, HBV, FM). The specialist service also has DA workers collocated in other provider services i.e. social care and health settings (primary & acute). The service is accessible to female and male victims aged 16+. The specialist service is commissioned to support victims to access places of safety that are commissioned by our district council partners and other places of safety within the national network. The service extends its support to victims of stalking within the context of DA. In Gloucestershire we have developed a specialist DA training pathway the commissioned services contribute to the delivery of training and are also commissioned to provide DA awareness raising for professionals and the wider community. In addition the LA commissions a specialist young person DA service for 13 – 19 year olds. The LA also commissions a DA perpetrator service which includes a partner safety worker. Commissioners have worked to develop DA guidance for managers and staff and promote DA awareness within the wider Gloucestershire employer network*
- *DA and VAWG provision is delivered by Domestic and Sexual Violence Outreach Service within Community Safety. Provision includes: IDVA provision co-located with Police, Health and Adult Social Care ISVA provision, Let's Talk- 12 week therapeutic programme for children and mothers affected by domestic abuse, Mother and Child Domestic Abuse Support Worker X4 Domestic Abuse Workers Domestic Abuse Early Help Lead, One Stop Shop, Freedom Programme, VAWG training, RAW Group - Support group for women with learning disabilities We support survivors who have experienced domestic abuse, forced marriage, sexual violence and honour based violence The Community Safety Team also coordinates: Multi Agency Risk Assessment Conferences Learning to Respect programme - a preventative domestic abuse education programme for schools Violence against Women and Girls plan 2019-21 Specialists projects commissioned by Community Safety include: Hounslow Children Affected by Domestic Abuse Project - part of this is delivered by HDSVOS, with child therapy and perpetrator work delivered by Domestic Violence Intervention Project( a division of Richmond Fellowship. AVA have received funding to deliver domestic abuse training and the LA has funded Hounslow Education Partnership to embed best practice in schools. Refuge Complex Needs Service. The Joint Commissioning Team in the Local Authority Commission the primary refuge provision (34 bed spaces) Services for those experiencing CSE and CCE are delivered by Protecting and Empowering Against Child Exploitation (PEACE) Project. This is a partnership project run by the Local Authority in conjunction with Women's and Girls Project and the University of Bedfordshire External funders such as London Councils, MOPAC and National Lottery also commission services in*



*Hounslow. These services include: Southall Black Sisters Women and Girls Network Asian Women's Resource Centre Advance Minerva Cranstoun- Men and Masculinities Programme*

## **CCG COMMENTS**

- *MARAC & MASH Commissioning*
- *Work together with LA to provide health evidence*
- *Sit on boards for MARAC, DHR, MDS, CSE, Training*
- *The CCG commissions IRIS as a specific service for GPs to train and take on referrals and provide support to patients. We also commission wider provider health services (NHS Trusts and smaller providers) including specifying in their contracts the need for safeguarding teams to provide domestic abuse (and other safeguarding) advice and support as listed above. We also assure the services to ensure they have policies, procedures and training in all aspects of safeguarding. As a safeguarding strategic team we sit on strategic planning meetings considering Complex Safeguarding (including sexual exploitation, modern slavery, the Domestic Abuse Strategy Group (oversees the City's DVA strategy and DVA Forum), Modern Day Slavery, FGM etc.*
- *Child exploitation worker*
- *Very little commissioning but sit on boards.*

## **PCC COMMENTS**

- *IDVA for deaf community*
- *IDVAs, Sexual violence, Perpetrator Programmes*
- *FGM/HBV*
- *Both sexes*
- *Modern slavery / human trafficking*

## **OTHER COMMENTS**

- *Dewis Choice - Support over 60's*

## **GENERAL COMMENTS FOR CONTEXT**

- *Domestic Abuse is an issue that Arun District Council see as a high priority. At this time we are working with Police and West Sussex commissioned service Worth Services to ensure that we highlight awareness of this. It would be wonderful to have perpetrator programmes for male and females that could exist outside criminal justice. I was commissioned to work with the street community by a 4 year funded project to reduce homelessness. Of all the females I supported, all had become street homeless as a result of domestic abuse. Complex needs and a trauma informed practice to substance misuse, mental health and domestic abuse.*
- *Within Bedford Borough Council there is not a specific lead for DA commissioning, each department who commissions a service is expected to be the Contract Manager. As I am the only person within the Council whose post is purely DA, I have picked up several of the DA commissioning areas such as the IDVA contract and the perpetrator services. There is therefore no real central point and lead on commissioning. I have therefore answered this to the best of my ability as if it were sent to someone else, they would forward it back to me to respond.*
- *We welcome any guidance that might result from this survey in identifying who could/should pay what % of service costs*

- *We know despite the Bradford Council's protection of funding for domestic abuse services that the need for support outstrips the demand. We are changing our strategy to become all age, be more preventative and to have more of a focus on whether looking more at perpetrator work would have a greater impact on reducing risk to victims. It feels that the innovation these changes bring will also put pressure on our funding envelope. Critically these things will also require us to consider how we can secure additional funding creatively. We have an extremely vibrant third sector in Bradford some of whom we do not fund and we work hard to secure Grant funding. We are spending a lot of time to build relationships on a west Yorkshire basis so that we can bid for regional funding. We would ask that you consider opening or continuing dialog with Government about the importance of funding for Government initiatives to be for more than one year, for monitoring to be agreed at the tt together and evaluated. This is not a push for money but a push for money to be used more wisely and in a way that will create impetus for change. We also think that National support around agreeing approach could lead to: 1) Agreeing National Data Sets that monitor not just prevalence but the social impact of the work done. 2) Setting stronger criteria to ensure that work done by DHR author and chairs is of quality. 3) A push for funding around prevention and what that could look like to develop stronger models for replication.*
- *This survey seems to be based on the assumption that most DA services are discretely commissioned. In fact the majority of services that impact on DA in Cumbria are part of wider services that are delivered by councils, health bodies and the police as well as many vital non-commissioned services provided by the third sector. The reliance on the outdated commissioner/provider model may not give a true reflection of who is engaged in this area.*
- *Please note that it has not been straightforward to complete this survey due to the commissioning of DA services and the wider Domestic violence activity work being led by different teams within the Council. The teams work closely together, but if the roles and responsibilities are not clear from the responses provided, please do get in touch.*
- *In light of COVID-19 LBH has developed a specific DA card for survivors which will be placed in supermarkets, Pharmacies and GP practices. The Police and safeguarding professionals will also have access to the card to share with survivors where it is safe to do so. Updated DA information has been uploaded on the Council webpage and Council Coronavirus page.*
- *There is currently a service review being undertaken at Manchester Council. We are aware that the commissioning is disjointed and complicated and we are investigating ways to deliver the service better. This review will be completed by the end of this year, and then the new services will be recommissioned by the beginning of 2021.*
- *Please advise when the outcomes and report from this research is available for us to review/use. What is your main purpose for the use of this survey data?*

**MAY 2020**

**Standing Together Against Domestic Violence**

**admin@standingtogether.org.uk**